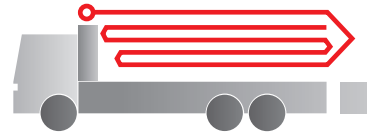


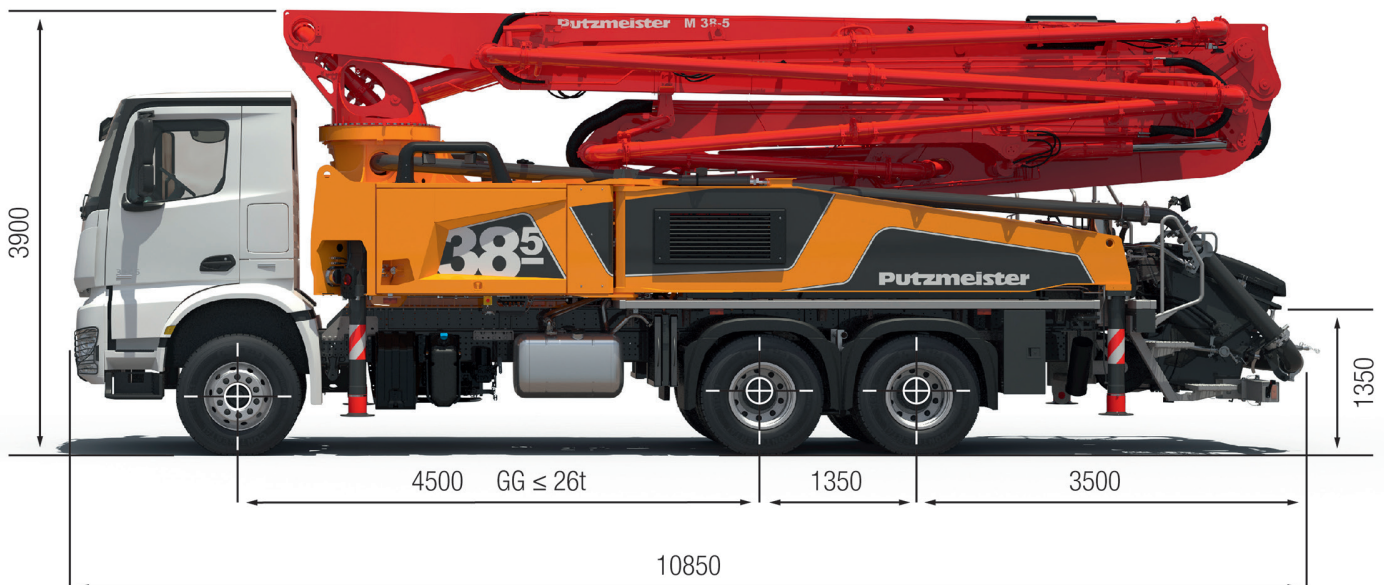
Truck-mounted concrete pump

BSF 38-5.16 H

Output up to 170 m³/h
 Delivery pressure up to 130 bar*



.16 H LS
.17 i LS



Note: Standard version. Dimensions and weights depend on truck, pump model and equipment.
 Dimensions in mm, MAN TGS 26.400.
 For illustration only.

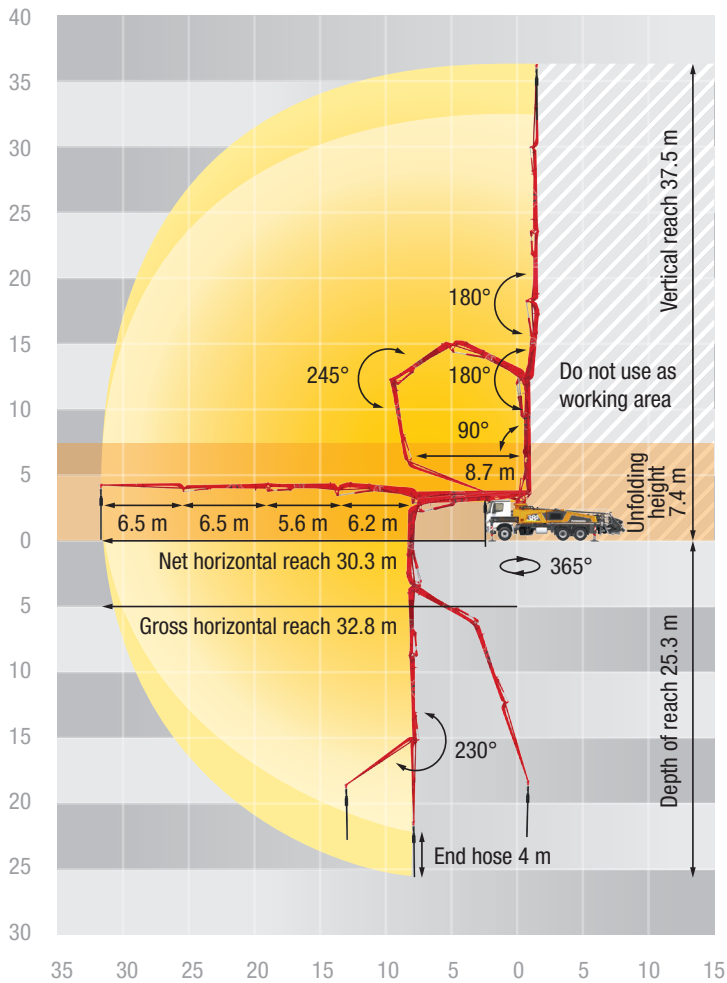
Technical data

| Boom M38 | | |
|------------------|-------|--------|
| Sections | | 5 |
| Reach height | m | 37.5 |
| Horizontal reach | gross | m 32.8 |
| | net | m 30.3 |
| Reach depth max. | m | 25.3 |
| Unfolding height | m | 7.4 |
| End hose length | m | 4 |
| Folding system | | RZ |
| Delivery line | | DN 125 |

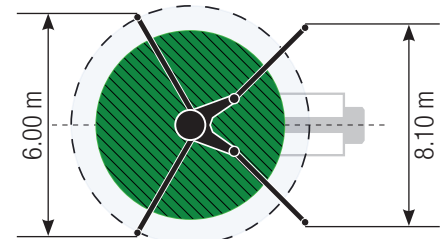
| Pump | | BSF | .16 H | .16 H LS | .17 i LS |
|-------------|-------------------|-------------------|-------|----------|----------|
| Rod side | Output | m ³ /h | 160 | - | - |
| | Delivery pressure | bar | 85 | - | - |
| | Strokes | 1/min. | 31 | - | - |
| Piston side | Output | m ³ /h | 108 | 160 | 170 |
| | Delivery pressure | bar | 130 | 85 | 85 |
| | Strokes | 1/min. | 21 | 26 | 26 |
| | Delivery cylinder | Ø mm | 230 | 250 | 250 |
| | Stroke | mm | 2100 | 2100 | 2100 |

*) Delivery line boom max. 85 bar.
 All data maximum theoretical.

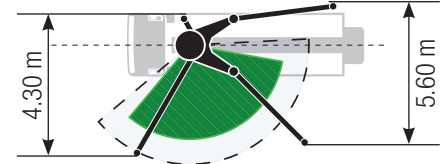
BSF 38-5 Reach information diagram, Support



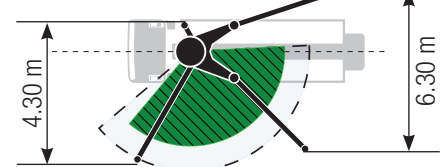
Standard



ESC



OSS



Support width based on center of support leg

Delivery scope Standard Line

| |
|---|
| Agitator radio remote/on site controlled |
| Agitator safety switch off automatically, depending on pump application |
| Agitator safety switch off, RFID control with startup protection |
| Boom tray switch with alarm unit „boom not in boom cradle“, RFID |
| Bracket for hammer and trowel |
| CAN-Bus system |
| Cardan shaft maintenance free |
| Central lubrication hopper, A-hinge and slew bearing |
| Chassis horn via remote control on hopper |
| Cleaning hose 10m incl. Bracket and spray nozzle |
| Compressed air connection rear side |
| Concrete hopper with agitator |
| Connection for filling water tank |
| Connections for hydraulic emergency supply (boom) |
| Container for sponge balls |
| Cooling unit integrated in support leg |
| deck delivery line in standard quality |
| Delivery cylinder chrome-plated |

| |
|---|
| Delivery line (1-layer) |
| Delivery note box, plastics |
| Diagnose interface |
| End hose 4.0 m DN 125 5,5“ |
| Ergonic 2.0 |
| Ergonic Pump System (EPS) incl. Ergonic Output Control (EOC) |
| Ergonomic water hose reel at riser pipe |
| Flushing water pump 160 l/min 25 bar |
| Fully extended support |
| Hand rail left and guardrail right |
| Hinged elbow with cleaning port |
| Hydraulic hose for replacement in hose pack |
| LED lighting hopper |
| LED lighting modul control box, left and right side |
| LED lighting of control points |
| LED lighting pump/water tank |
| Operating manual certified (1x paper, 1x CD-ROM), spare part list |
| Operation point at hopper for draining water pipe |
| Painting: 3-colored Putzmeister standard |

| |
|---|
| Platform non-skid |
| Radio remote control with Ergonic Graphic Display (EGD-RC) |
| Rubber collar on concrete hopper |
| Safety eyebolt for maintenance at rotary head |
| Setup frame screwed |
| Soiling indicator hydraulic oil filter on RGD-RC (display radio remote control) |
| Spectacle wear plate DURO 22 |
| Splash guard, fixed |
| Stainless step to platform right hand side |
| S-transfer tube switchover fast/slow |
| Support plates (4x) |
| Swivel support plates |
| tool set incl. standard equipment |
| Towing eye |
| Wash-out port lid with slide pin |
| Water supply at hopper |
| Water tank 700 l with level indication |
| Wear resistant delivery line elbow with extension on both sides |